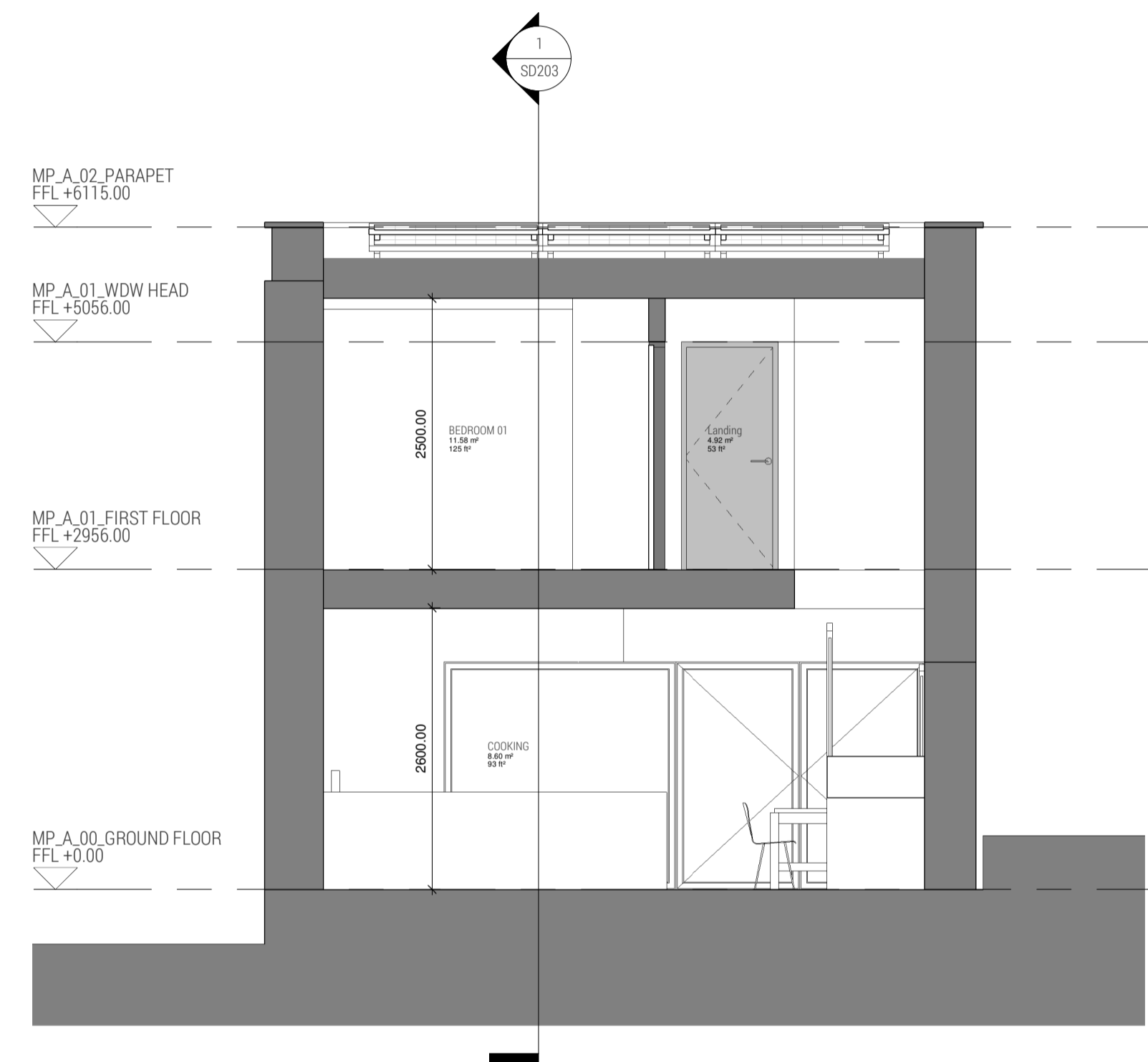


1 LONG SECTION



2 SHORT SECTION

Revision Schedule

DRAWING STATUS - Project Status

1912 / SD203

PARC HADAU
HOUSE TYPE D2

SECTIONS

1:50@A1

jul 19

LOYN+CO
ARCHITECTS

0202 711432 | architecture@loyn.co.uk
88 Gildon Street, Penarth, CF54 1ET | Penarth, Wales
Copyright LOYN+CO architects | 1 | 06 not scale

