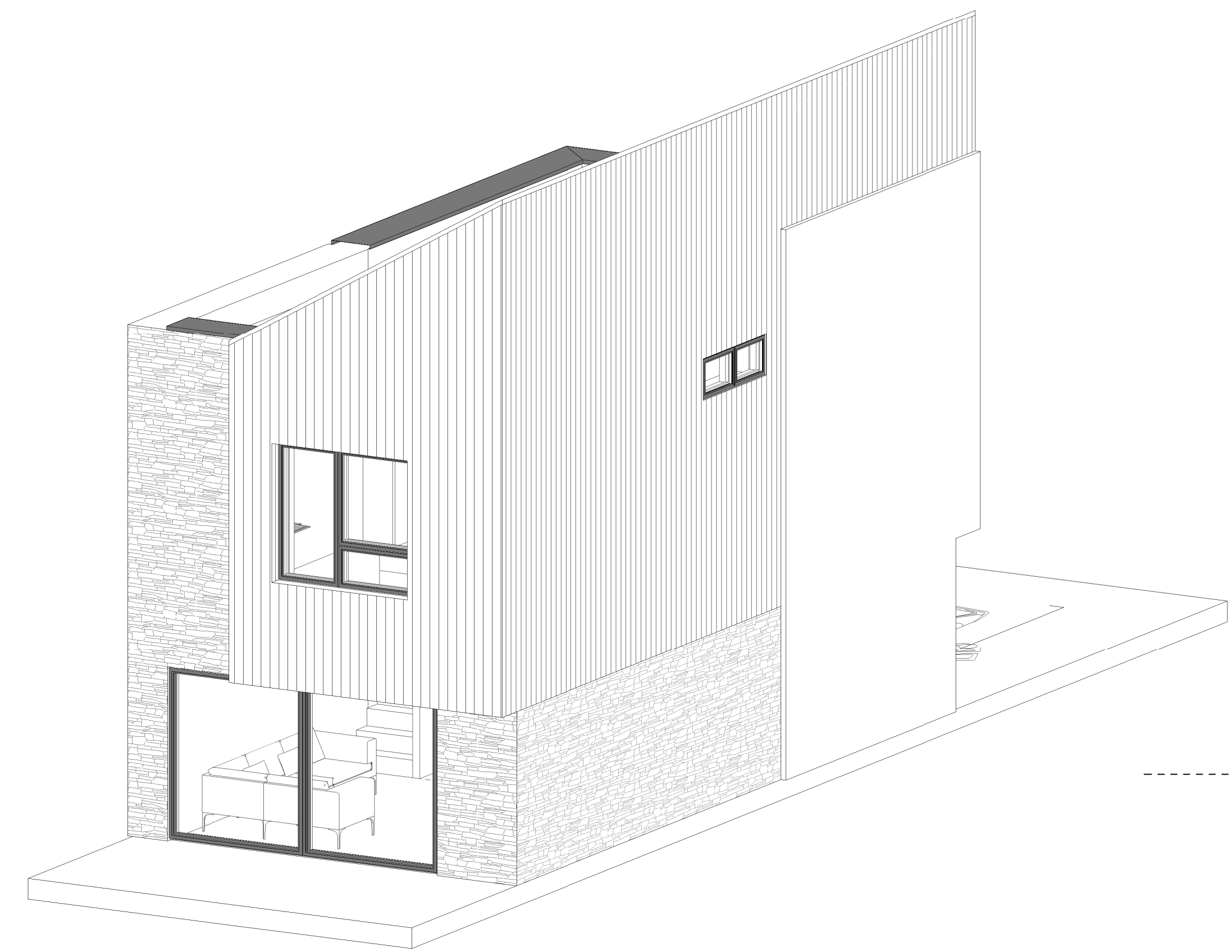
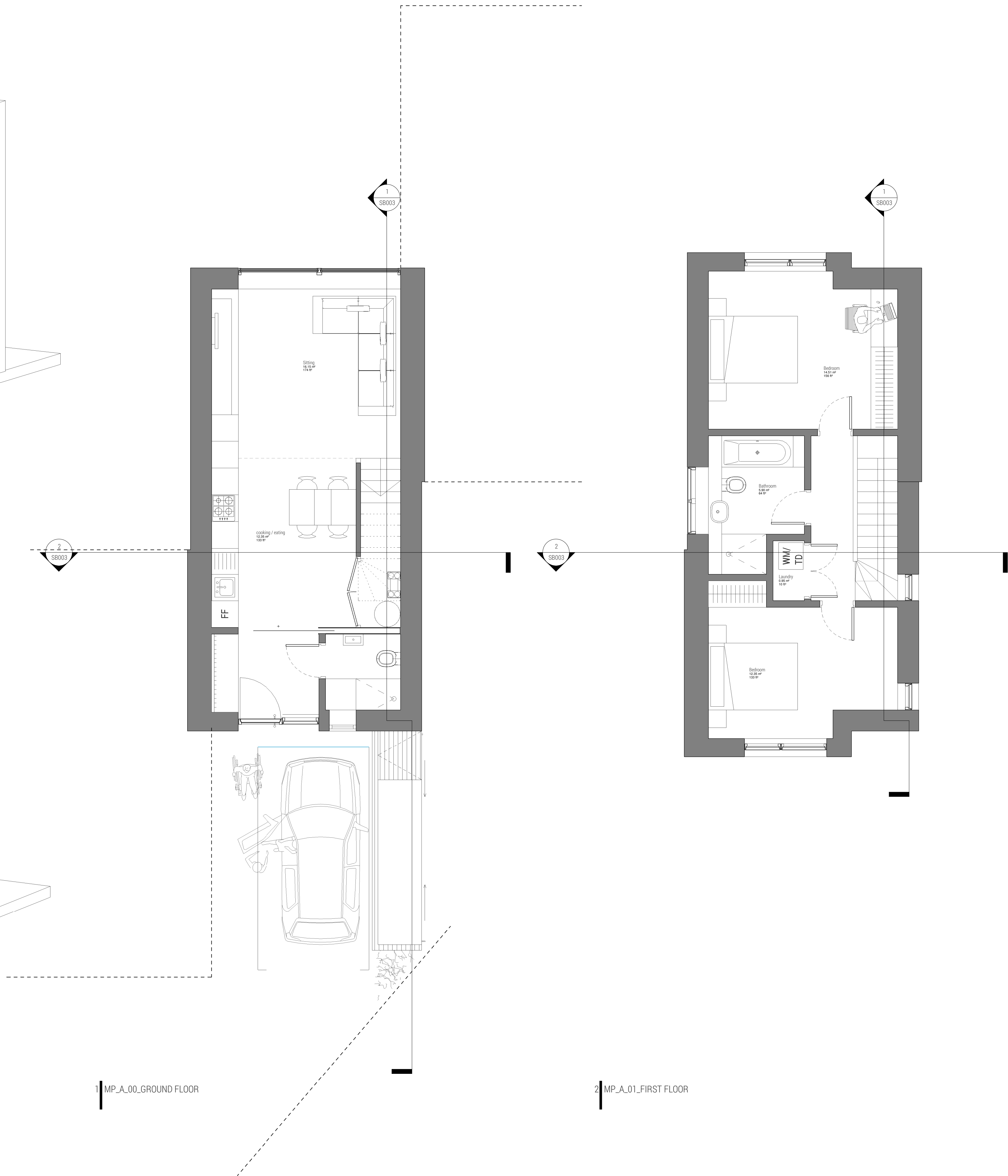


4 | 3D Ortho 1



3 | 3D Ortho 2



1 | MP\_A\_00\_GROUND FLOOR

2 | MP\_A\_01\_FIRST FLOOR

Gross internal area	
Level	GIA m2
MP_A_00_GROUND FLOOR	40 m <sup>2</sup>
MP_A_01_FIRST FLOOR	43 m <sup>2</sup>
	83 m <sup>2</sup>

Revision Schedule  
 DRAWING STATUS - Project Status  
**1912 / SB001**  
 PARC HADAU  
 HOUSE TYPE B  
 FLOORPLANS + 3D

1:50@A1 jul 19

**LOYN+CO**  
 ARCHITECTS

02020 711432 | architecture@loyn.co.uk  
 88 Gildon Street, Penarth, CF54 1ET | www.loyn.co.uk  
 Copyright LOYN+CO architects | 1 | @not scale

